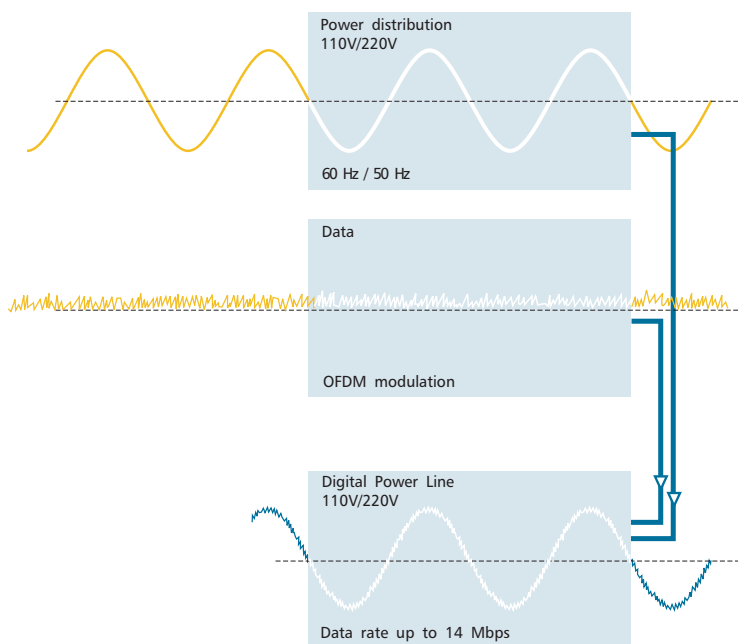
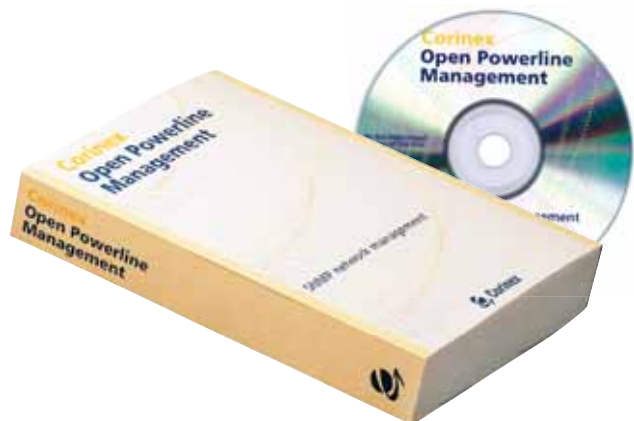




# Corinex Open Powerline Management

Over the last few years, Multi Service Operators (MSOs) have upgraded their access networks to a high bandwidth communication infrastructure to offer Internet, streaming video, interactive Digital TV, online gaming and entertainment services for their customers. These new services allow to restructure the potential revenue per each subscriber easily and increase the flat revenues from Internet, basic TV and voice access services. The operators who are targeting the residential and small business market gain now a new opportunity to capitalize upon their market position by employing technologies that allow them a total control of the infrastructure all the way from the access up to the last device in the network.



## Powerline Communications

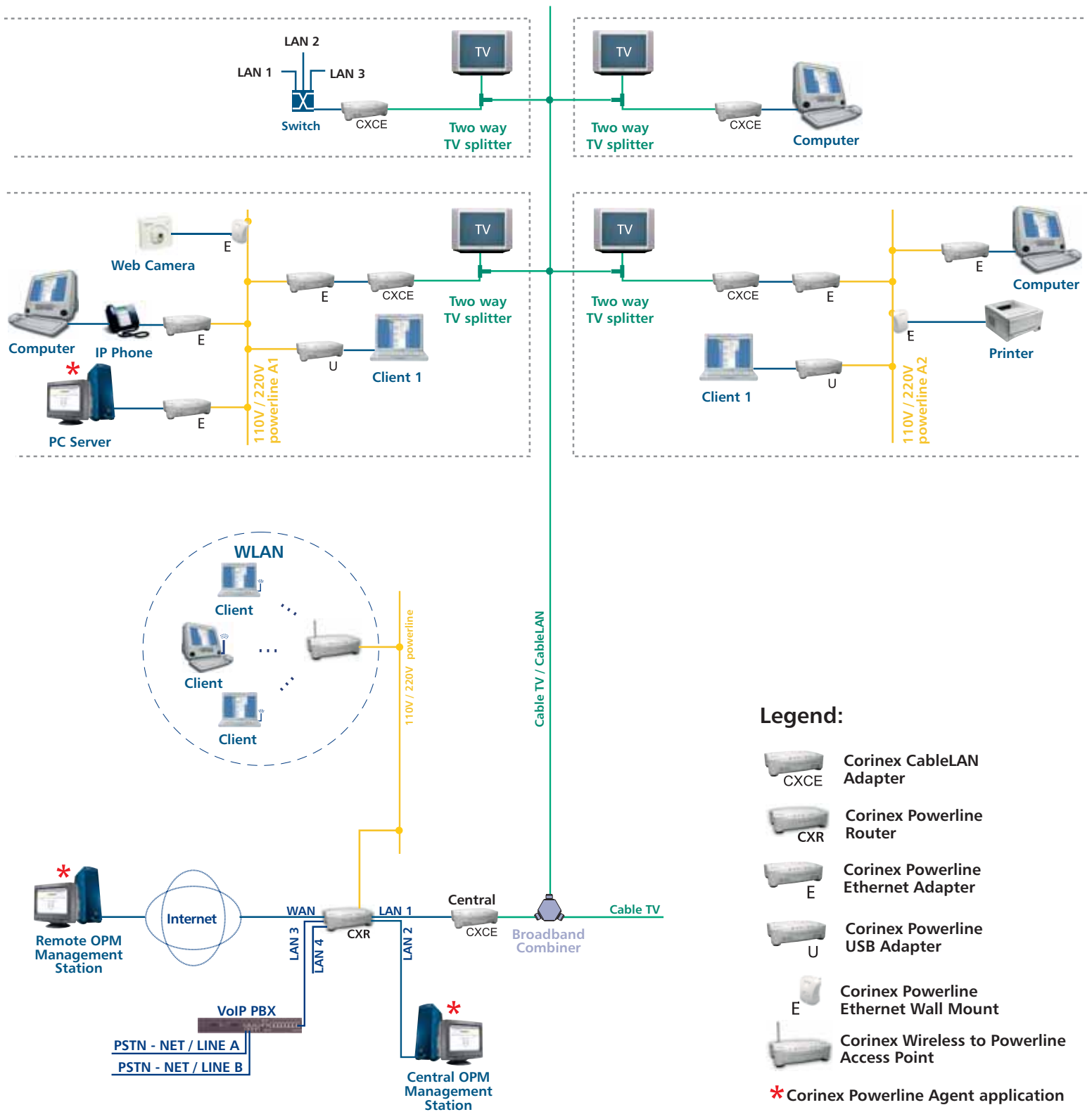
Corinex Powerline products (USB, Ethernet, Wall Mount, Router and Wireless) are designed to use existing AC electrical wiring within the home as a networking physical medium. Robust performance in the electrical noisy power line channel is enabled by the use of the Orthogonal Frequency Division Multiplexing (OFDM) technology. This multi-carrier modulation scheme allows devices to dynamically "surf the channel" - instantly shifting data from one carrier to another as noise and attenuation conditions change. The OFDM technology finds the low noise, low attenuation portions of the spectrum available to it and continues data transmission.

Corinex Powerline products have been optimized for high-reliability networking applications. Internet and network access is available through every power outlet in the home or office. Corinex's HomePlug certified Powerline networking technology supports up to 14 Mbps data rates. Corinex Powerline adapters are certified by and compliant with the HomePlug Powerline Alliance Industry Specification 1.0.1. This ensures interoperability with other HomePlug devices. Powerline technology provides a high quality of service for the adapters to ensure secure, reliable channels for transferring files, streaming audio, video, or voice data and even online gaming.

## What Can a Corinex Open Powerline Management Provide?

Corinex Open Powerline Management (OPM) is a powerful and versatile network management software tool that allows the operator to configure, monitor and test all CableLAN and powerline devices across their entire network. Corinex Open Powerline Management is based on SNMP (Simple Network Management Protocol) - a standard protocol for enhanced management and testing of communication devices. The management is independent from any hardware configuration and as a worry-free system, designed for future network expansion with support for HomePlug standard certified powerline devices. A standalone management system for the Corinex CableLAN and powerline devices in the network is build into the Corinex SNMP platform.

The platform's flexibility allows the integration of any SNMP communication device upon demand easily. A very interesting aspect for service providers, who would like to manage their combined wireless, CableLAN and powerline network efficiently!

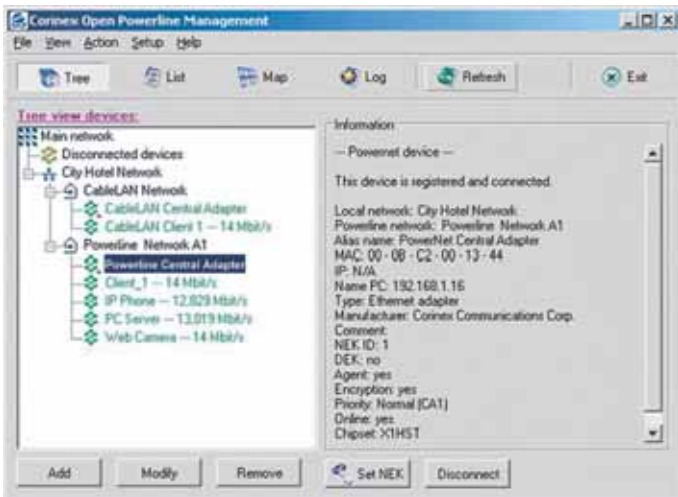


The Corinex Open Powerline Management is designed to manage the entirely new designed and enhanced Corinex Powerline and CableLAN products family, consisting of:

- Corinex Powerline Ethernet Adapter
- Corinex Powerline USB Adapter
- Corinex Powerline Ethernet Wall Mount
- Corinex Powerline Router
- Corinex Wireless to Powerline Access Point
- Corinex CableLAN Adapter

## Product Features

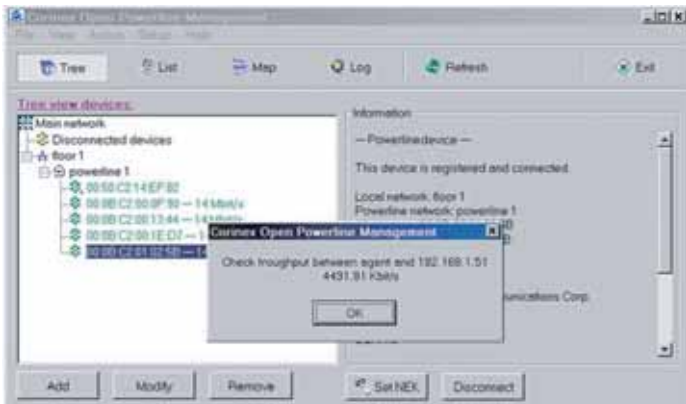
- Seamless Management of Complex Networks over Long Distances



Creating a Logical Structure of Networks

One Corinex Open Powerline Management enabled computer can act as a base station and collect management data from all other CableLAN and powerline network nodes efficiently. Each network can be managed by the OPM, either locally or remotely, as long as one computer or router in the network carries a Powerline Agent application responsible for the translation of encrypted SNMP commands. The OPM enabled computer uses SNMP commands to activate the agents to look for all CableLAN and powerline devices in their networks. This makes any customer's network completely manageable and delivers high flexibility. The network is easily remotely accessible by Operator's network administrator through the Internet.

- High Usability and Manageability



Real Throughput Measurement - Result

The OPM's wizard helps the administrator to create a logical structure of all managed networks and to define the Agent by exploring the network segment (to add or delete devices).

- Powerline Network Testing Makes the Installation Easy and Effective

Another very exciting feature of the management software is its ability to monitor and test the quality for all electrical outlets within a building before a powerline network installation!

This is a unique feature many service providers are looking for in combination with the ability to collect statistical data and having an event logging capability on hand. Corinex Powerline Agent implemented in a network enables the administrator to measure a maximum theoretical throughput level for each powerline device in the connection to the Agent's powerline device. The OPM allows measuring the real throughput between the Agent's device and any other device having assigned an IP address connected to the same network as the Agent's device.

The powerline management software offers also easy to use and intuitive graphical interfaces for all networking utilities and enables an easy and effective installation of CableLAN and Powerline communication equipment.

Operator's network administrator can change a customer's device security settings even remotely and is able to create secure networks for user groups. It is not possible to reach the operator service from the powerline or the CableLAN adapter without a unique password dedicated by the operator to the adapters.

- Remote Password Management

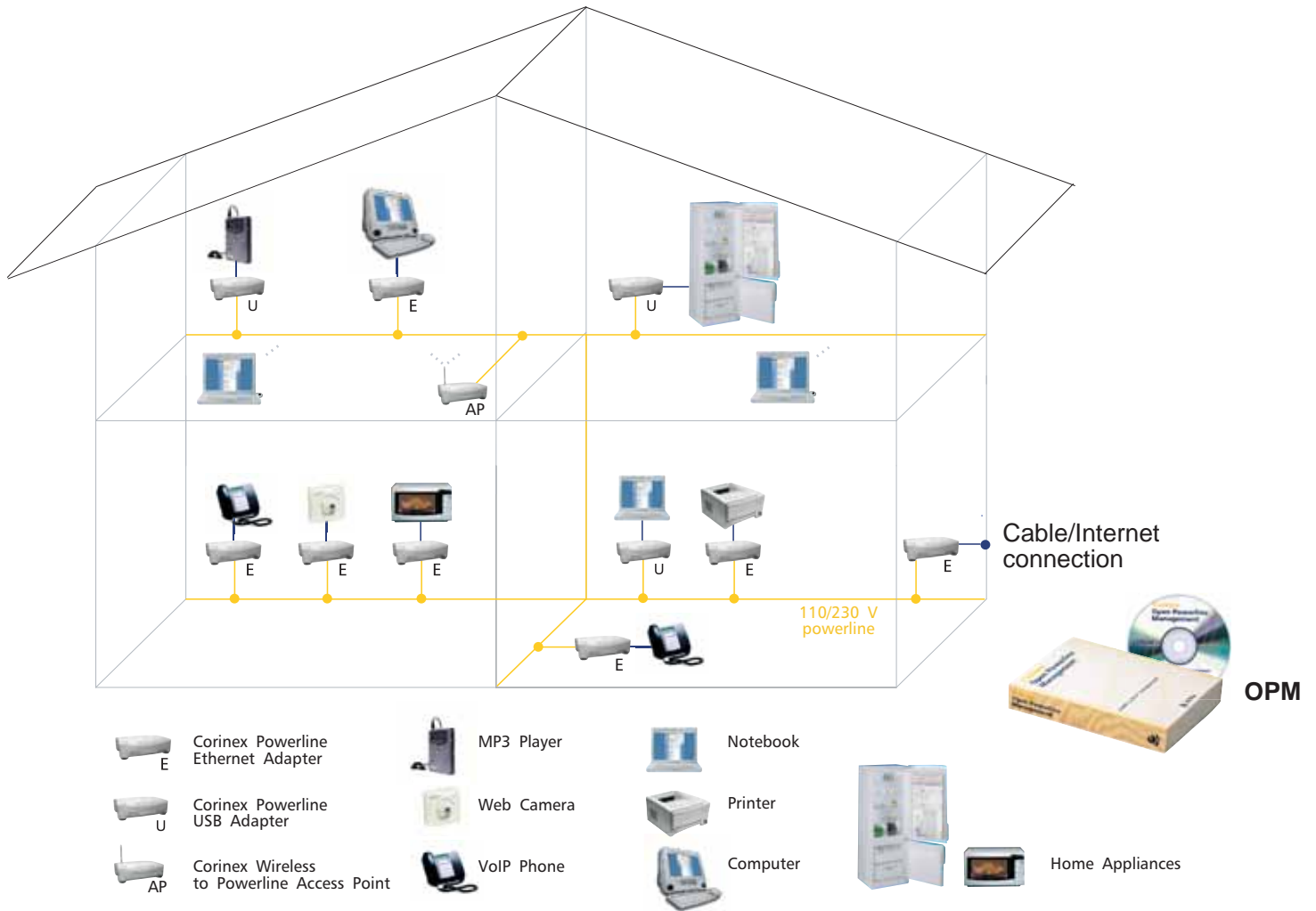
A password management enables the operator to choose which CableLAN or powerline device will be allowed to access the service. An installation for connectivity of any additional device (for example if bought in a retail channel) requires an interaction between the user and the operator. The Operator is immediately in control and can change a customer password without her/his knowledge or approval - in accordance with a potential service agreement in place.



Adding Powerline Device - Powerline Agent Settings

- Creating a logical structure of networks
- 56 Bit DES link encryption with key management for secured communication
- GUI Interface for easy communication, running on Windows 98SE, 2000, NT, XP
- Managing Powerline Adapters, Corinex Wireless Access Points, Corinex Powerline Routers, CableLAN Adapters, regardless on which OS is the attached host running
- SNMP platform compatibility
- Easy to use and install

## Manage your Household Devices with Powerline



Powerline Connected Household - Future of Home Networking

## Product Specifications

**Product Code:** CXM-OPM

Please refer to the Price List for the exact product code specification.

### Product Content

- Installation CD
- Printed Manual

## Technical Specifications

- Protocol Support: SNMP v.1, SNMP v.2, HomePlug 1.0.1
- GUI Operating System Support: Windows 98SE, 2000, ME, NT, XP
- Agent Operating System Support: Windows 98SE, 2000, ME, NT, XP, Linux



Corinex Communications Corp.  
 World Trade Center  
 404-999 Canada Place  
 Vancouver, B.C.  
 Canada V6C 3E2  
 Tel: +1 - 604 - 692 0520  
 Fax: +1 - 604 - 694 0061  
 E-mail: [global@corinex.com](mailto:global@corinex.com)  
<http://www.corinex.com>

Corinex Global, a.s.  
 Ruzova dolina 19  
 820 05 Bratislava  
 Slovak Republic  
 Tel.: +421 - 2 - 5021 4811  
 Fax: +421 - 2 - 5556 7309  
 E-mail: [global@corinex.com](mailto:global@corinex.com)

2003-10-20 ver.2

Corinex is a registered trademark of Corinex Communications Corp.  
 HomePlug® is a registered trademark of HomePlug® Powerline Alliance.

The content of this document is furnished for informational use only, it is subject to change without notice, and it does not represent a commitment on the part of Corinex Communications Corp.